

# SHOT BLAST FLOOR MARKING

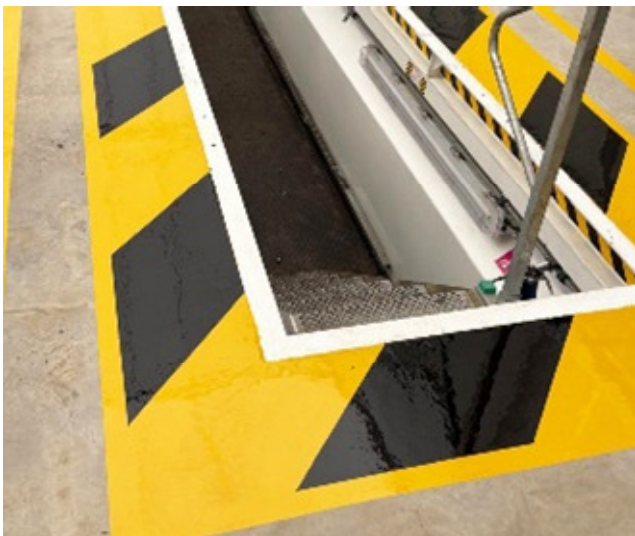
Warehouse **identification**,  
floor **marking** and **safety** solutions.



Preparing the concrete prior to applying a paint system is fundamentally important to the performance and longevity of warehouse floor marking. The term 'Shot Blast' is used to describe the method of preparation used on concrete, before applying paint.

Shot blasting is the practice of hitting the floor surface with very small metallic beads, which strip the smooth finished surface to expose a new roughened concrete surface. The fresh concrete beneath is ideal for the paint system to adhere to.

This method of line marking is typically used for bulk storage lanes, battery charging areas, pedestrian walkways, anti-slip areas, and forklift truck lanes to name a few.



Fortega are not restricted to one type of paint or manufacturer, which means the paint type we select, is based on suitability and performance. We will never use inferior products and only select the most appropriate based on the parameters and demands of the environment in which they are to be installed.

The time needed to install shot blast line marking is significantly less than the alternative durable preparation methods. This makes it more cost effective and the preferred option for those who operate very busy facilities.

